

Figure 28: Set Time Frame

### 5.3.2.3 Firmware Upload

**Devices** → **Remote Stick** → **VERTEX Lite** → **Configuration** → **Firmware Upload**

**Devices** → **USB Bluetooth Remote Stick** → **VERTEX Lite** → **Configuration** → **Firmware Upload**

A Firmware update is only necessary if you experience problems with the current collar firmware or need a feature only available in a newer version than the present one. In this case, get the appropriate file from VECTRONIC Aerospace. Select the update (.bin) file with . Afterwards, you can see that some information appears in the window. You can check information on Device Model, File Type, Version (the firmware version you are going to upload to the collar) and the Version Attributes. Send the upgrade to the collar with . The upload will be verified automatically while it is progressing.

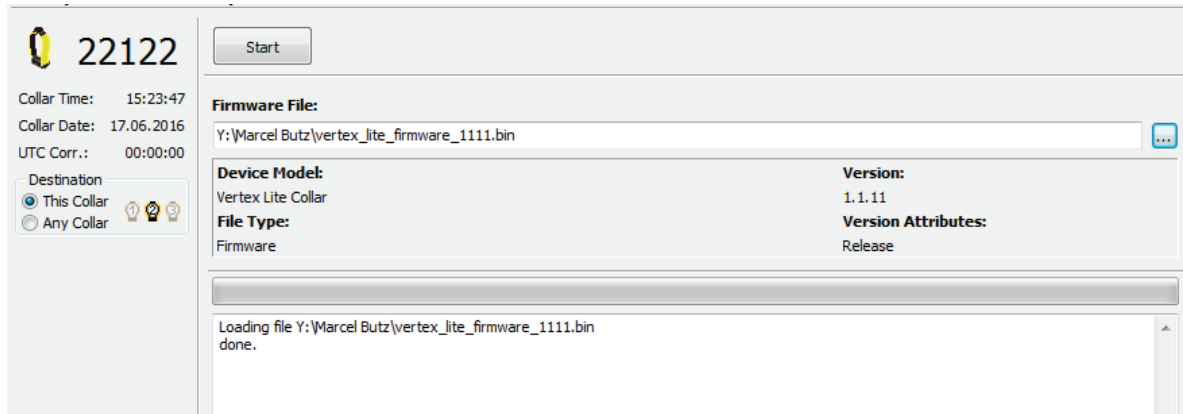


Figure 29: Collar Firmware Upload frame

### 5.3.3 Schedules

**Devices** → **Remote Stick** → **VERTEX Lite** → **Schedules**

**Devices** → **USB Bluetooth Remote Stick** → **VERTEX Lite** → **Schedules**

Schedules, either VHF or GPS, define when the respective sensor is on, meaning the VHF Beacon is broadcasting and the GPS receiver is conducting GPS fixes. Both require battery power and some serious thoughts should be spend on before deployment.

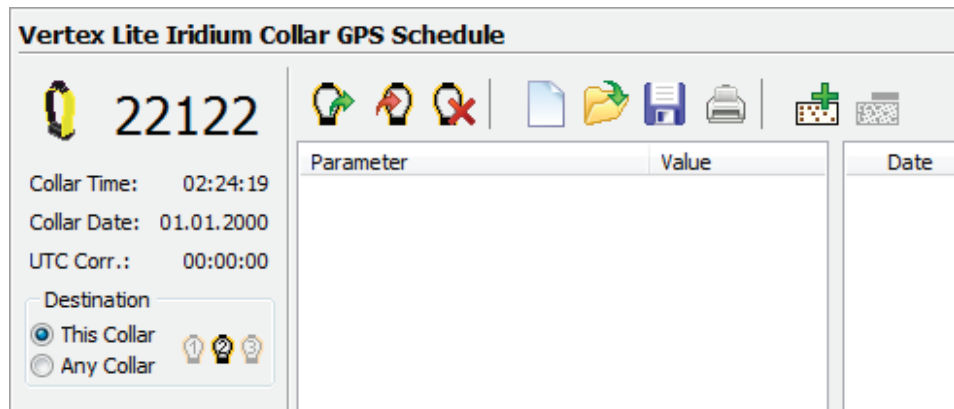


Figure 30: Schedule creation window

The schedule creation window shows all option around collar creation and is more or less identical for the GPS as well as the VHF schedule builder. They differ in the rule format which are described in the following chapters.